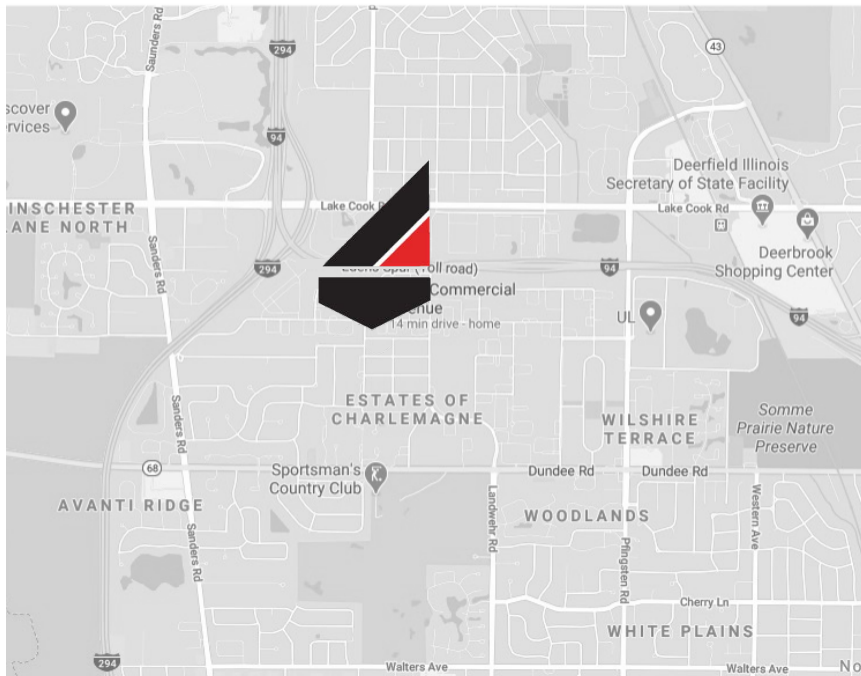


3545-3575 COMMERCIAL NORTHBROOK, IL



35,000 SF INDUSTRIAL BUILDING FOR SALE



OFFICE	8,352 sf
LAND SIZE	1.51 Acres
ZONED	I-1
TENANCY	Multiple
PARKING CAPACITY	60 Surface Spaces
POWER	3,000 Amps/480 Volts
SPRINKLERED	Wet
CEILING HEIGHT	21' Clear
COLUMNS	32'w x 38'd
LOADING	2 Int. Docks & 3 Drive-In Doors

MURRAY KARBIN
Managing Broker
847-630-3906
mkarbin@summitcommercialre.com

SARA KARBIN-LEONARD
Broker
224-595-8847
sarak@summitcommercialre.com

3545-3575 COMMERCIAL NORTHBROOK, IL

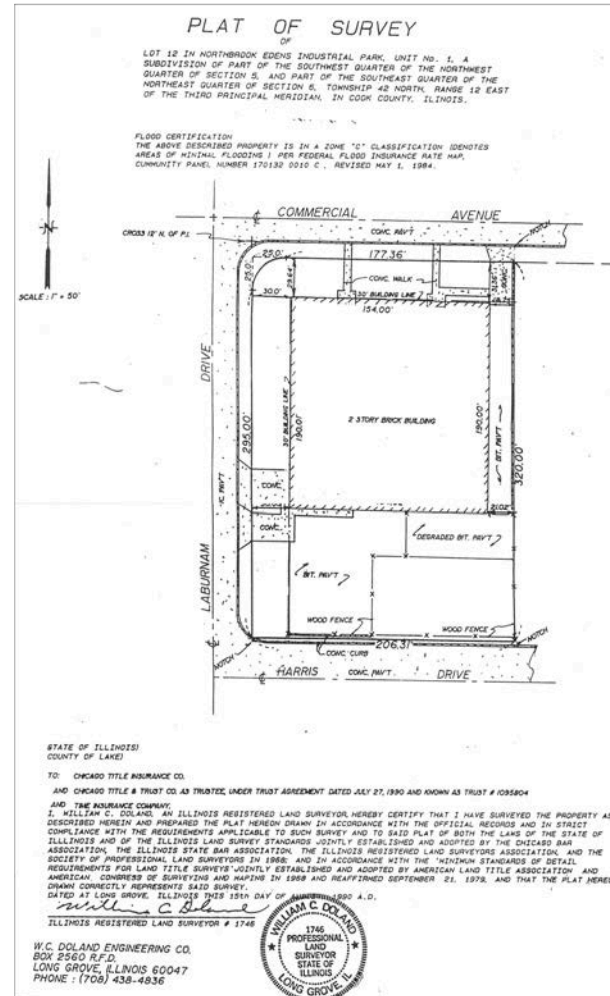
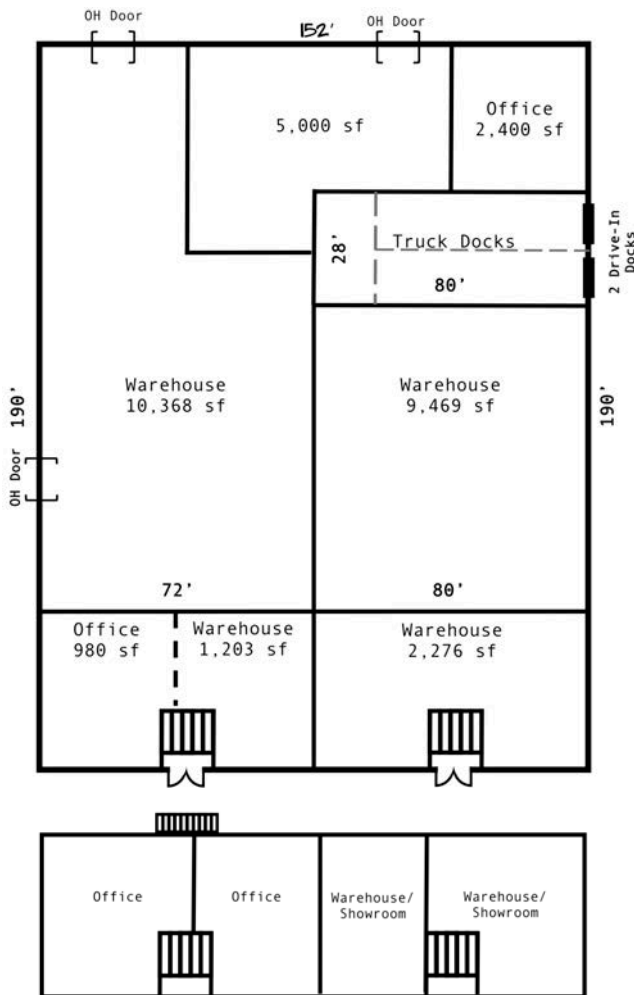


HIGHLIGHTS

- Heavy Power
- 60-Car Parking, Expandable
- High Visibility/ 4,200 VPD
- Masonry Construction
- Minutes from I-94/I-294
- Close to Northbrook Business Parks & Lifestyle Amenities

SALE PRICE: \$2,000,000

TAXES: \$2.34 (2017)



MURRAY KARBIN

Managing Broker

847-630-3906

mkarbin@summitcommercialre.com

SARA KARBIN-LEONARD

Broker

224-595-8847

sarak@summitcommercialre.com